

Sorter

Sorting Software

- This is one of the operating programs of the multifunction DW-XT WEIGHT indicator. With this program you can sort and classify all type of products by levels of weight, such as: Fruit, chickens, fish, meat... Thus, any kind of product that should be grouped depending on their weight.
- When looking for a controller with these features remember how your present expectations may change in the future and how could the considered system be adapted to the new working way.

MAIN FEATURES:

- ✓ Allows to sort up to 24 strips of weight.
- ✓ Provided with optoisolated digital inputs operating as indicator's keys repeater (beginning of cycle, stop, pause, etc.), with a photo eye input.
- ✓ Allows to carry out listings of the results of the sortings.
- ✓ This indicator can be easily configurated by the program **DW-REMOTE** for WINDOWS™.
- ✓ Allows to transmit the sorting results to a remote computer.
- ✓ Allows direct connection with most popular PLCs making unnecessary to use its own input/output digital connections.
- ✓ Allows the connection in network of up to 99 indicators that can be managed from a central computer.
- ✓ Allows the assignation of an unloading station as a broom, to place the products that don't fit in any of the programmed weight levels.

Software available for the following indicators:



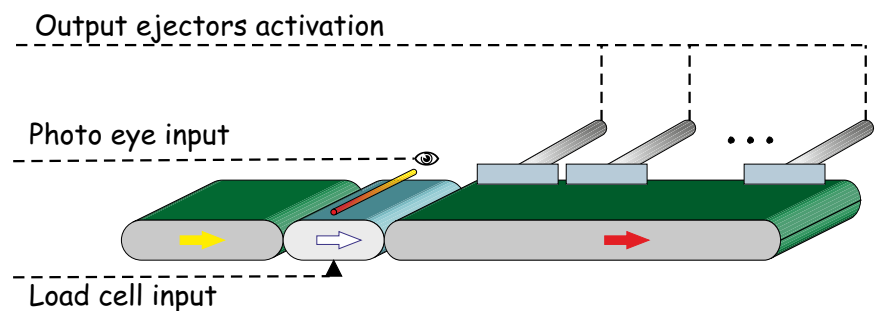
DW-XT



DW-CT/P



DW-SE



Sorter

FEATURES:

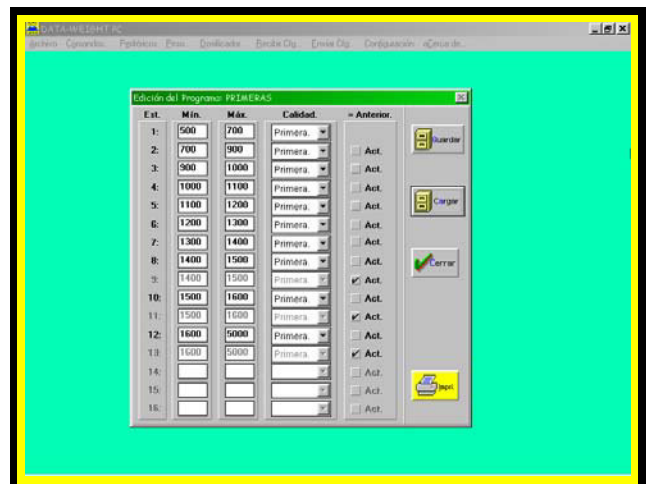
- ✓ No. of unloading stations: from 2 up to 192 (depending of the version).
- ✓ No. of sorting programs: 50.
- ✓ Display and setting to zero of grand total, totals and partials of the working order.
- ✓ Carry out and/or modify sorting programs available.
- ✓ Configuration options for the sorting programs:
 - ▲ Delete
 - ▲ Edit
 - ▲ Reports
 - ▲ Go to...
 - ▲ Queries
- ✓ Two types of sorting:
 - ▲ Normal (by weight)
 - ▲ Equal (one piece in every station without weight control)
- ✓ Control digital outputs:
 - ▲ Unload stations
 - ▲ Reject station
- ✓ Control digital inputs:
 - ▲ Stop / Pause
 - ▲ Start / Continue
 - ▲ Photocell
- ✓ Test of each station's eject.
- ✓ The configuration options are protected with PASSWORD.
- ✓ Configuration parameters:
 - ▲ Number of stations
 - ▲ Expelling time
 - ▲ Distance between stations
 - ▲ Reject station.

REPORTS:

- ✓ Detailed report of each order.
- ✓ Detailed report of each order by fractions of 100 g.
- ✓ Sorting programs.
- ✓ Distance between stations.

OPTIONS:

- ✓ RS232, RS485 or Modem communication with other devices.
- ✓ Barcode label printing of the variables.
- ✓ We can adapt the communication protocol to other manufacturers.
- ✓ Possibility to carry out modifications in the sorting equipment, to adapt it to any process.
- ✓ Possibility of connection to central computer.
- ✓ Possibility of statistics calculations such as variances, standard deviation, anovas, etc, allowing the user to analyze the tendencies of the different orders (this feature is not included in the standard sorting system).
- ✓ Whole formulation process and its results can be controlled by the program **CLASIFICA-PC** for WINDOWS.
- ✓ We can adapt the indicator's operating to specific customer's needs.



PC Configuration utility for the DW-XT-sorter indicator.