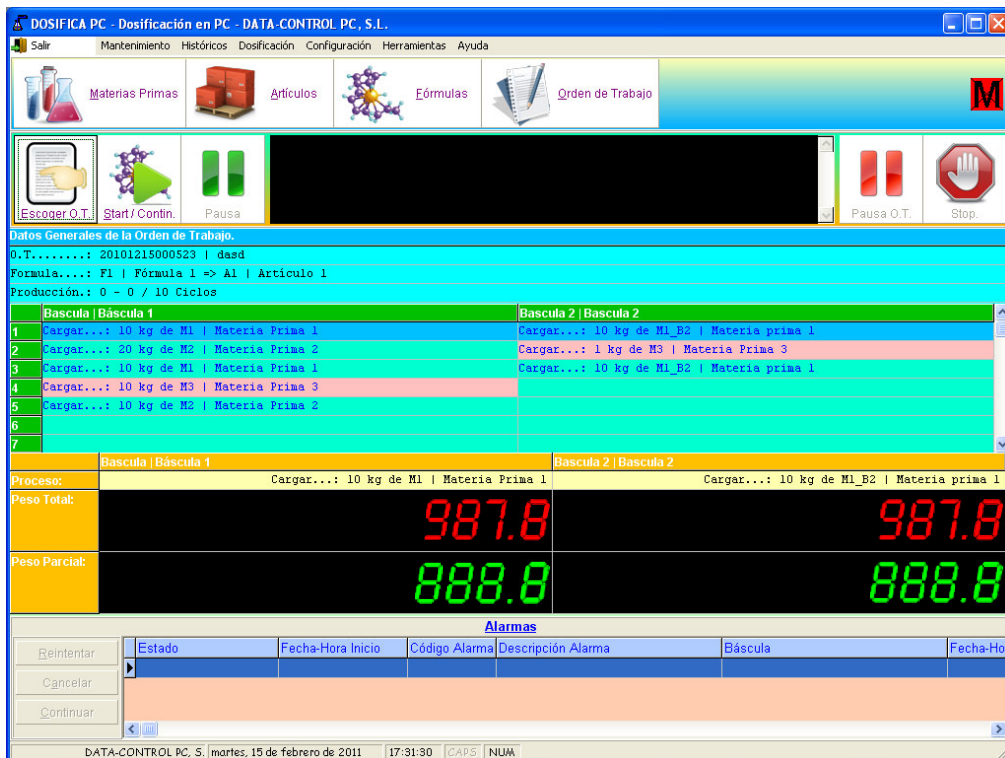


➤ The dosage systems are essential in a great amount of situations. The most important characteristics to keep in mind are: the amount of managed formulas, flexibility, error detection, precision and simplicity of programming and operating.

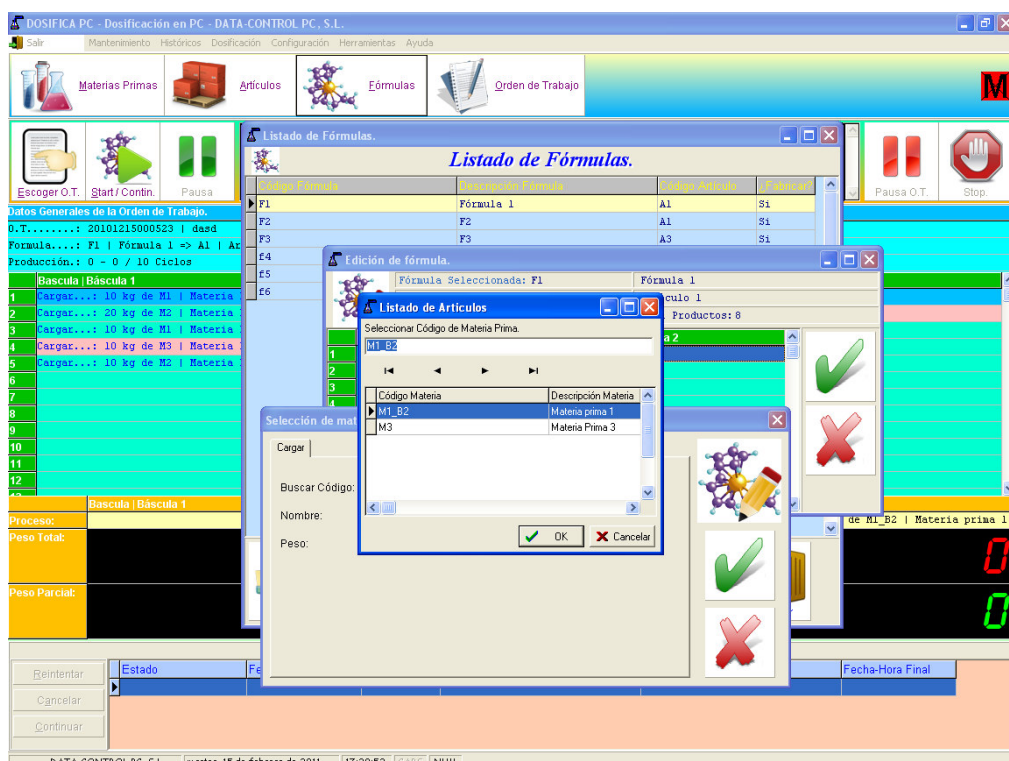
➤ When looking for a dosing system with these features remember how your present expectations may change in the future and how could the considered system be adapted to the new working way.

## This modular dosing system consist of:

- Computer with 80 column printer.
- Dosing program under WINDOWS™ environment.
- DW-XT weighing indicator(s) with RS232 or RS485 communications.
- Electrical cabinet with all the electronic modules to control input and output signals.



Screen for the supervision of the dosing process.



Formulation screens.

## MAIN FEATURES:

- ✓ Formulation in % or kg
- ✓ No. of scales: from 1 to 5 (depending on the version).
- ✓ No. of products to dose with 2 rates: from 8 to 64 (depending on the version).
- ✓ No. of products to manage: Unlimited.
- ✓ No. of formulas and steps per formula: Unlimited.
- ✓ No. of positions in working orders: Unlimited.
- ✓ Available management options:
  - ▲ Add
  - ▲ Reports
  - ▲ Delete
  - ▲ Find
  - ▲ Edit
  - ▲ Sorting
  - ▲ Queries
  - ▲ Fix range
- ✓ Stock control of every product, kg produced per formula and kg spent of each raw material.
- ✓ Manual product management allowing the operator to add small components manually.
- ✓ Possibility of managing not-dosing products in the formulas.
- ✓ Automatic or Manual preact weight adjustment.
- ✓ Control output signals:
  - ▲ Waiting Start of cycle
  - ▲ Last cycle
  - ▲ Coarse / fine rate
  - ▲ Manual product
  - ▲ Unload
  - ▲ Alarms
  - ▲ Partial Unload
- ✓ Control input signals:
  - ▲ Start cycle / Continue
  - ▲ Start / Stop
  - ▲ Pause
  - ▲ Unloading gate closed
- ✓ Power failure control, allows continuing dosing after it.
- ✓ Calculation of the average cost price of the produced products.
- ✓ The configuration options are protected with a configurable PASSWORD.

## REPORTS:

- ✓ **Preview of the reports on the screen.**
- ✓ Products.
- ✓ Brief and detailed list of formulas.
- ✓ Working order.
- ✓ Report of finished formulas.
- ✓ Report of consumed products.
- ✓ Report of regularizations.
- ✓ Report of end of working cycle.
- ✓ Historical report of performed dosings.
- ✓ Products to be manually dosed.
- ✓ Final report of the working order.

## OPTIONS:

- ✓ Integration with our weight bridge weighing system **LORRY-PC**.
- ✓ Duplicity of operating keys by means of external buttons.
- ✓ RS232, RS485, Modem or ETHERNET communication with other devices.
- ✓ Communication with other PC.
- ✓ Integration with SCADA systems.
- ✓ Barcode label printing of the performed dosings by a labelling machine.
- ✓ We can modify the operating on demand.